

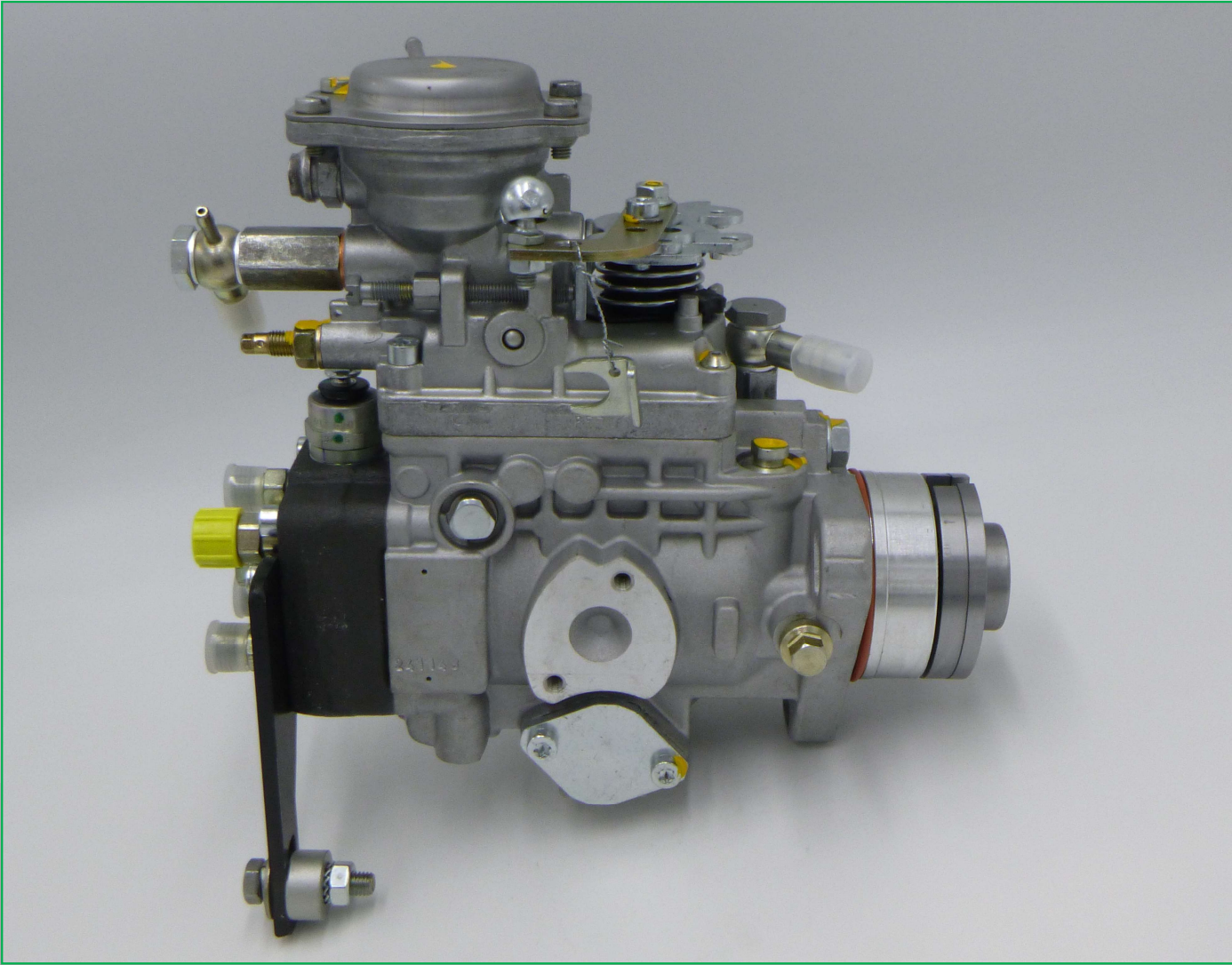
FITTING INSTRUCTIONS

0470504023 ET 0470504042

0470504023 = 0986444056

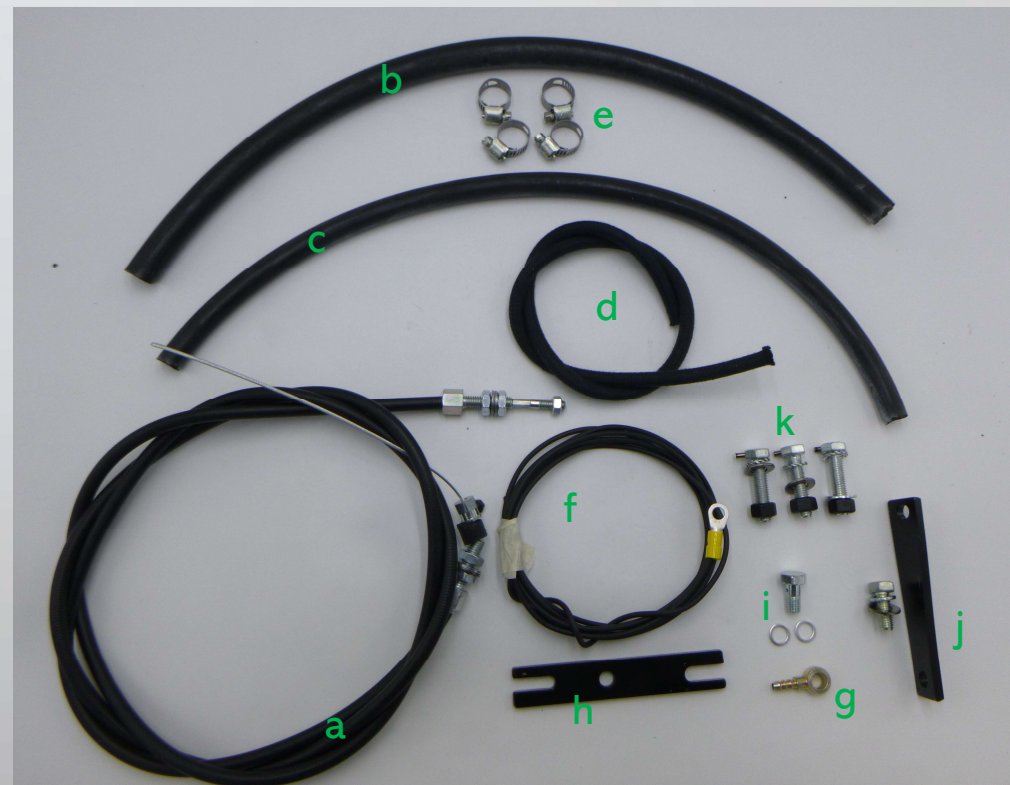
0470504042 = 0986444058

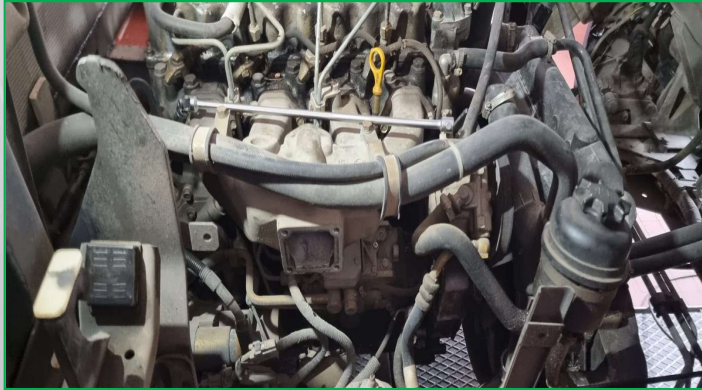




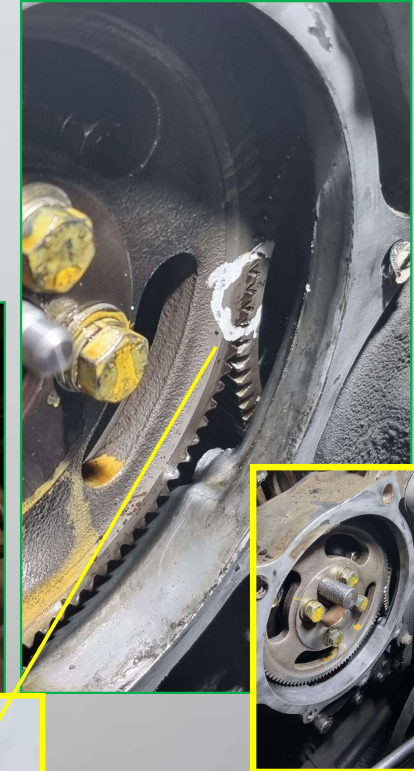
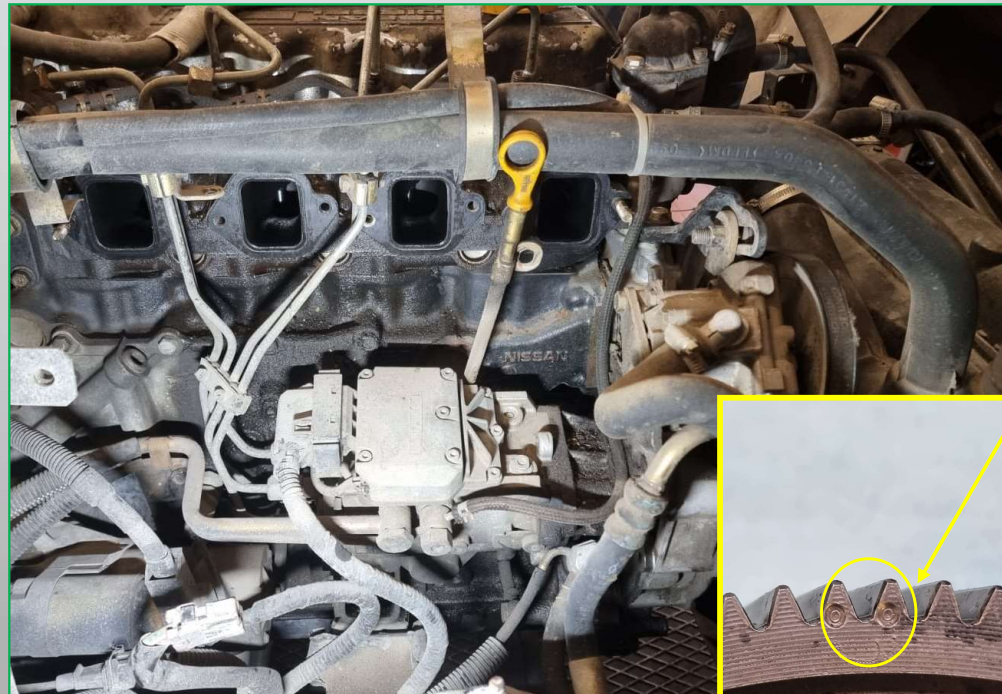
KIT COMPONENTS

Pompe pour 0470504042	x 1
a) câble d'accélérateur	x 1
b) Tuyau de carburant 8 mm	x 0.5 m
c) Tuyau d'air 6 mm	x 1.0 m
d) Tuyau de carburant 6 mm	x 0.5 m
e) Colliers de serrage en métal 10x18	x 4
f) Câble électrique complet avec œillet	x 0.5m
g) Raccord banjo 8x6	x 1
h) Passage du câble d'accélérateur	x 1
i) Raccord percé 8M1	x 1
j) Support du câble d'accélérateur	x 1
k) Vis de fixation de la pompe	x 3
Notice de montage	x 1





1. Fixer la pompe VP29/30 en position sur le moteur, puis la retirer



2. Insérer la pompe de remplacement



3. Fixer la pompe avec les écrous et les boulons présents dans le kit



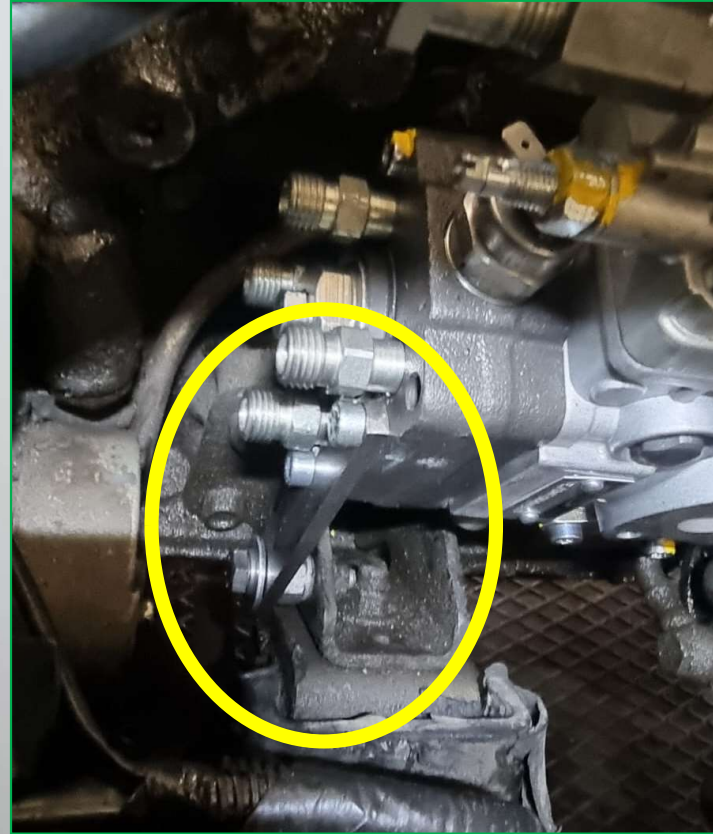
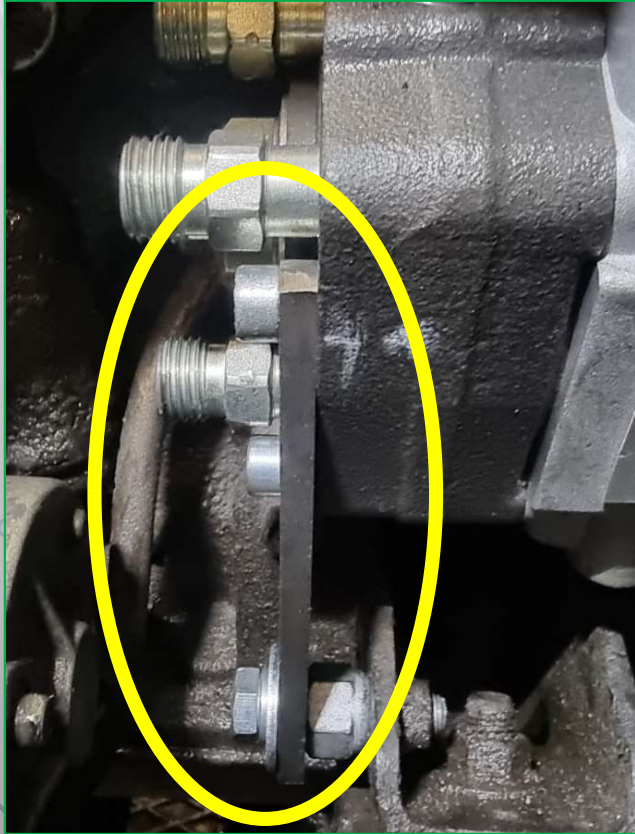
4. Fixer la poulie à la pompe avec les boulons du moteur d'origine



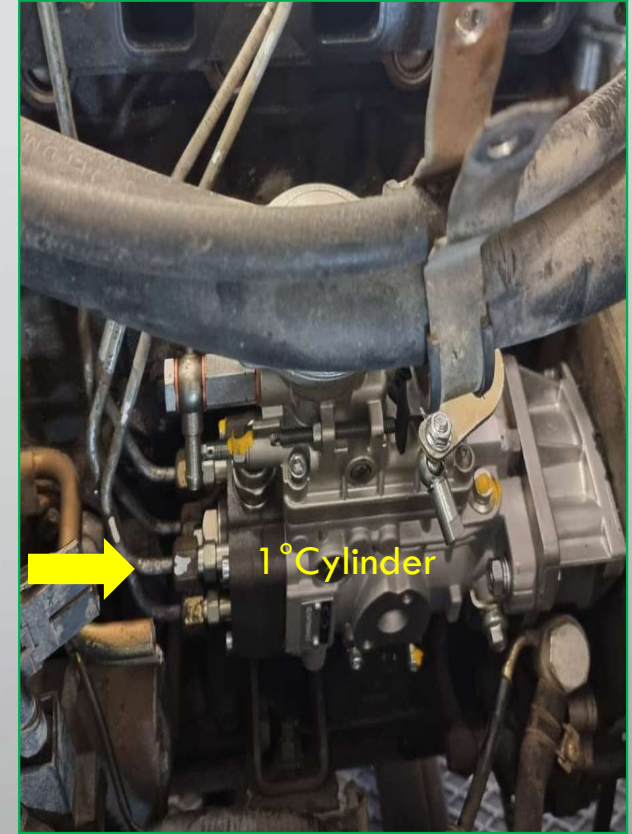
5. DÉVERROUILLER LA POMPE ET PLACER LA PLAQUE INTERMÉDIAIRE



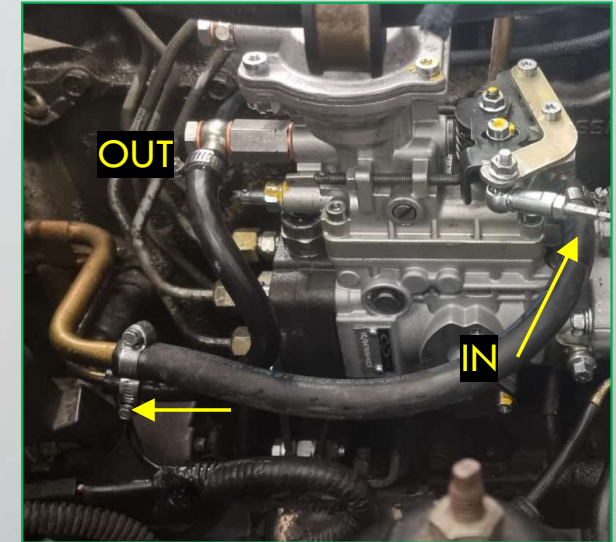
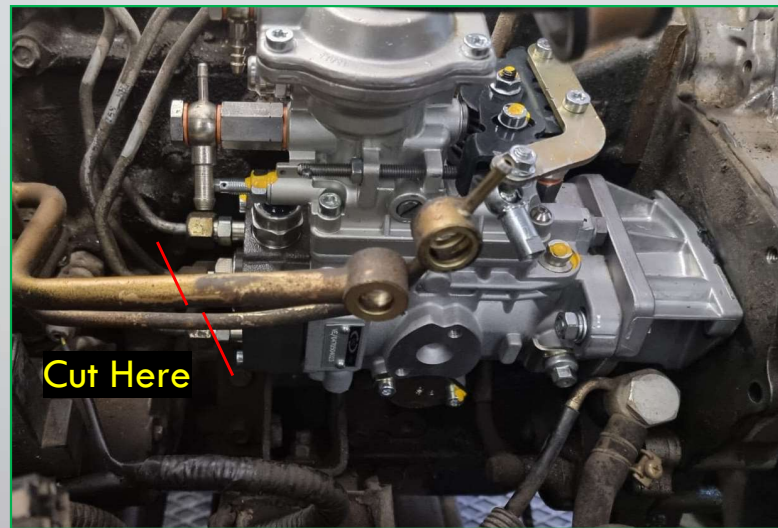
6. Fixer la pompe au bloc moteur



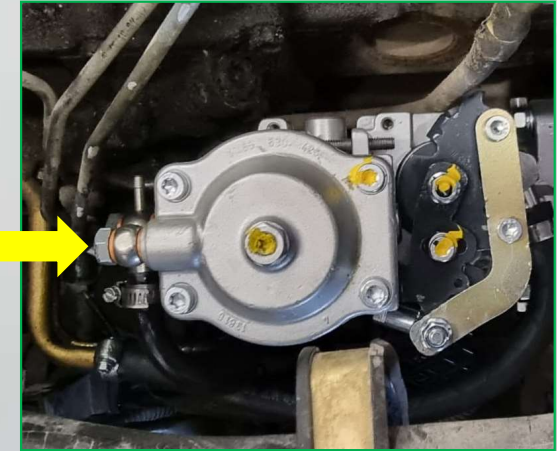
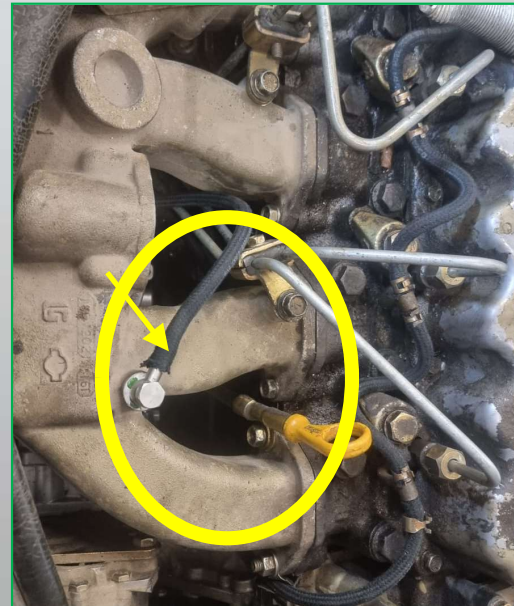
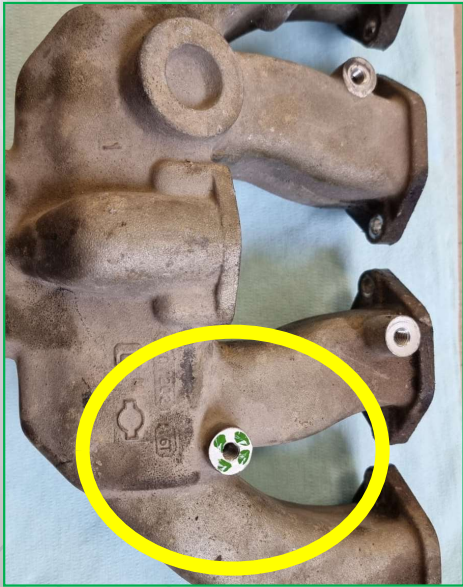
7. Raccorder les tuyaux



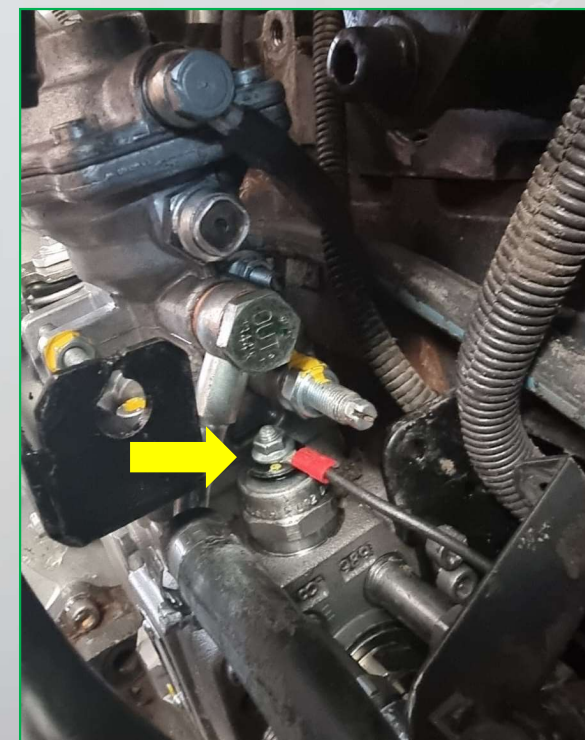
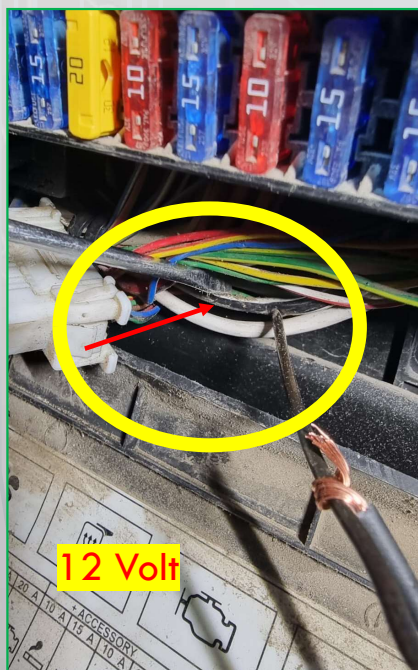
8. Raccorder l'alimentation en carburant en modifiant les tuyaux provenant du filtre à gasoil avec le tuyau fourni dans le kit



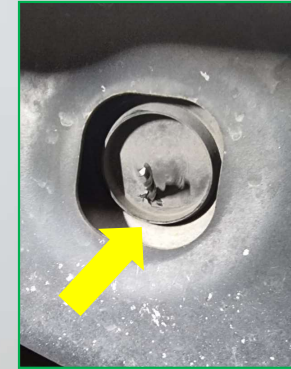
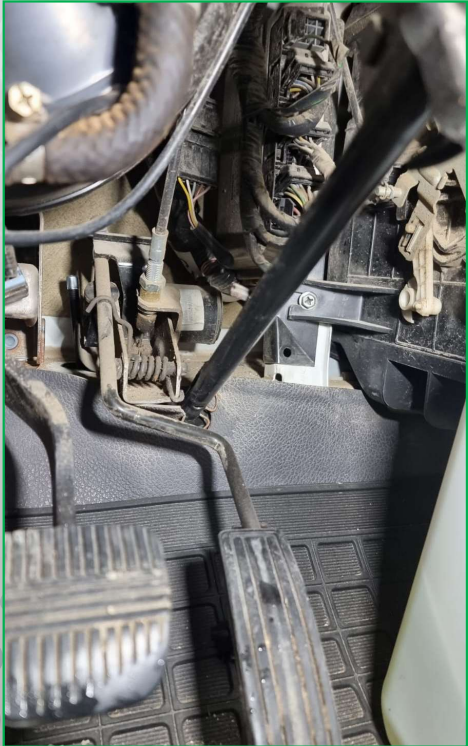
9. Raccorder la tuyauterie provenant du turbocompresseur au LDA de la pompe.

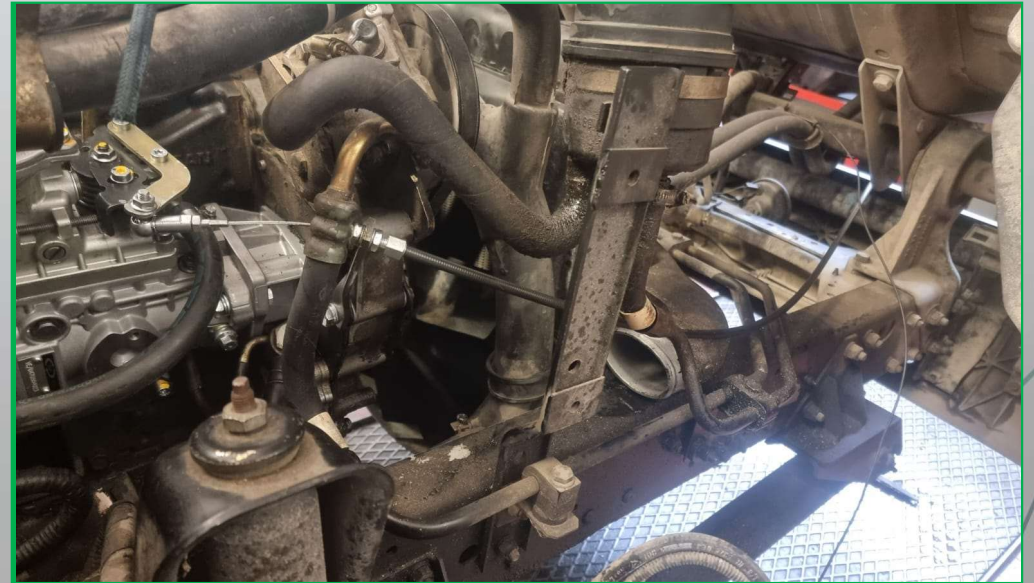
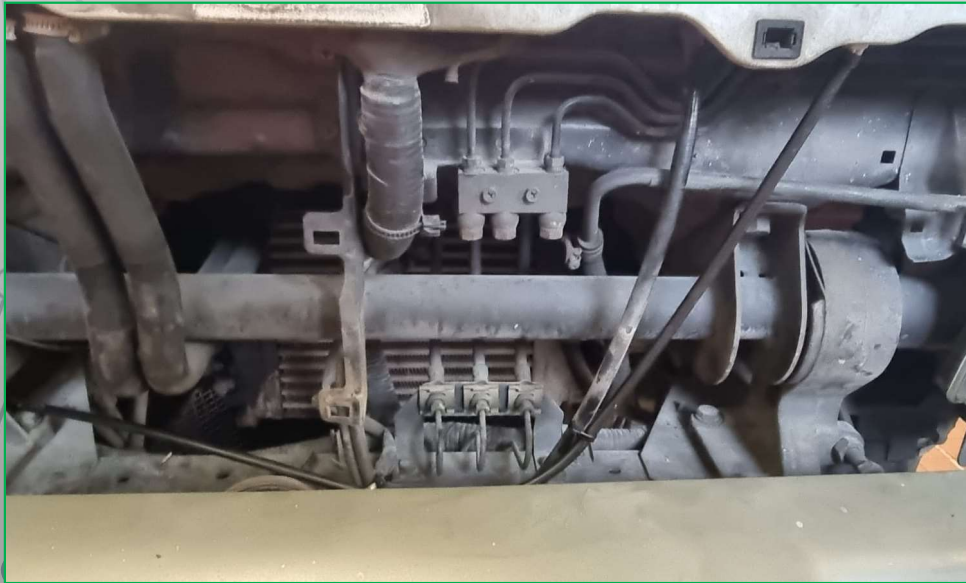
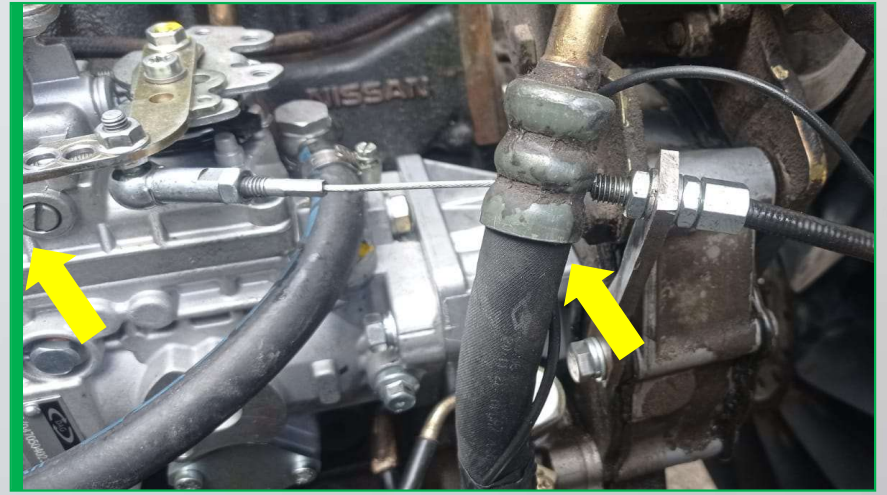


10. Brancher la butée électrique sur 12 volts



11. Connecter le câble d'accélérateur





11. Retirer l'ampoule

